



301 Highgrove Road  
Grandview, Missouri 64030  
P. (800) 821-3600 F. (816) 765-2452  
www.Taylorvertex.com

# CUTCovers

LSx Valve Cover Conversion Kit  
Installation Instructions  
Part #555751

**Important!**  
Read all instructions  
before you begin  
installation.

*Only compatible with LS-1 (D580 / 12558948) and square truck (D581 / 12558693) coils.*

## Please, check the contents of this kit before installation begins.

### Parts List

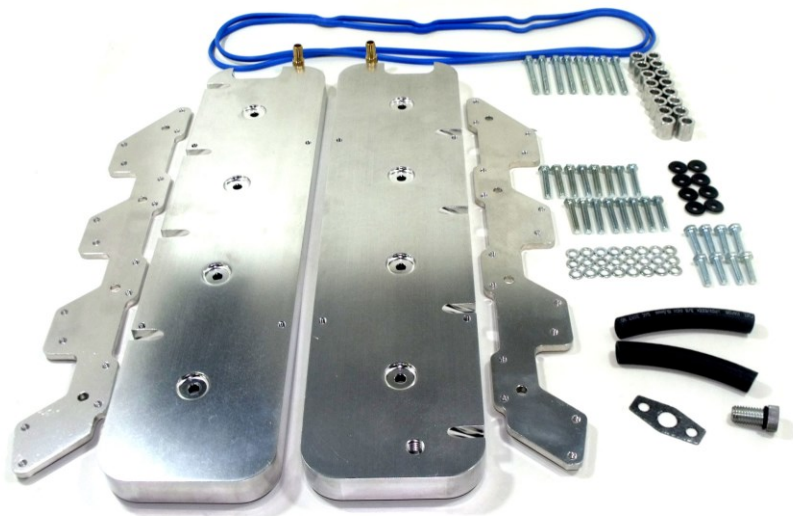
1	Left & Right Cut Covers	SM0008
2	Coil Brackets	SM0009
1	Valve Cover Gasket Set	222-0001
8	6mm x 60mm bolts	210-0045
16	6mm x 35mm bolts	210-0040
24	6mm Flat washers	210-0108

### Parts List

8	6mm large rubber-back washers	210-0107
16	3/4" spacer	210-0094
1	Billet oil plug	SM0010
2	3/8" NPT vent hose adapter	213-0029
2	3/8" I.D. x 4" hose	213-0030-04
8	1/4" x 1" bolt	210-00155

**Prepare the engine to receive the conversion kit.**

- Carefully disconnect secondary ignition coil wires from spark plugs and ignition coils. Carefully disconnect primary wiring from ignition coils (Note: to prevent confusion later; label each coil to each mating coil plug connector).

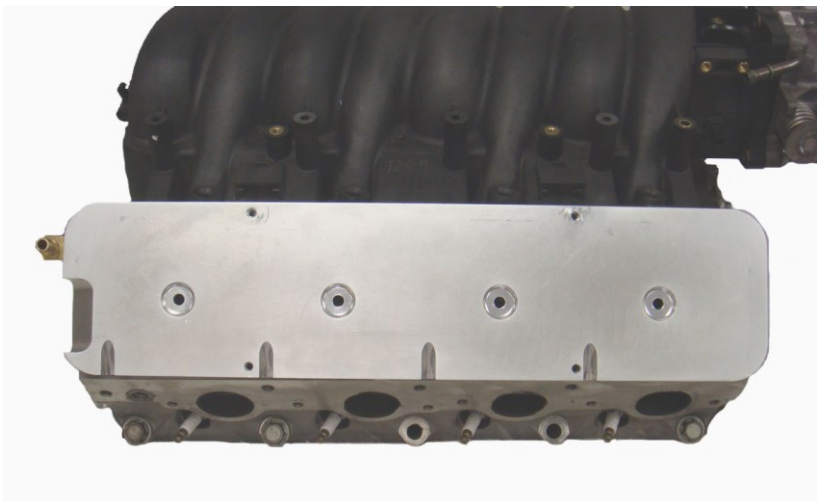


2. Loosen and remove ignition coil assemblies from valve covers.
  3. Loosen and remove PCV vent and valve from valve cover.
  4. Loosen and remove valve covers.
1. Place thread sealer (tape or liquid) on vent hose adapter threads. Install vent hose adapters into CUTCovers. Tighten vent hose adapters to allow the hose nipple to point upward (45°, 60° or 90° to the CUTCover surface, this will be your choice). *You may substitute -AN adapter (not provided) if you are using a performance hose or custom hose covering instead of the 5/16" & 3/8" hose adapters that are provided in this kit.*



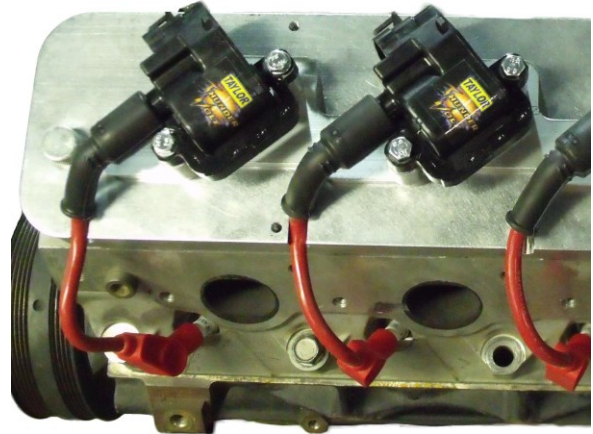
2. Place each CUTCover onto cylinder head (reference the primary wire cutout towards the rear of cylinder head and the secondary wire slots towards the spark plugs).

3. Proceed to installation of ignition coils.



## Installation of ignition coils

1. Place a 6mm washer on a 60mm bolt. Slide bolt through ignition coil bracket. Slide large rubber-back washer (rubber-side downwards; the rubber should seal the CUTCover surface) onto bolt. You will do this eight times (4 on each cover). Place ignition coil bracket onto CUTCover. Start each bolt to secure the CUTCover to cylinder head. Finish basic installation by tightening CUTCover bolts to 106Lb/in torque.
2. Loosen and remove ignition coils from the OE ignition coil brackets if you have not already done so. Thread ignition coil with a 35mm bolt and flat washer (X2 per coil). Attach coil to the ignition coil bracket using a  $\frac{3}{4}$ " spacer. Tighten ignition coil bolts. Tighten firmly, but not to strip the aluminum bracket. You will do this step eight times (four ignition coils per side).
3. Connect proper end of ignition coil wire onto ignition coil. Allow the ignition coil wire to lay in cutout on CUTCover. Connect proper end of ignition coil wire to spark plug.



4. Proceed to Electrical.

## Electrical

1. You have many options on this step.
  - 1.1 Remove OE ignition coil harness from OE coil bracket. Then remove the harness shrouding on your OE ignition coil harness and make the ignition coil connections, route the ignition coil harness bulk connector between ignition coils and the CUTCovers and terminate the connection on the inside of the assembly.
  - 1.2 You can have a custom ignition coil harness built to allow the ignition coil harness bulk connector connect to the main engine harness outside the CUTCovers assembly.
  - 1.3 You can have a custom ignition coil harness built to eliminate the ignition coil harness bulk connector and attach directly to the engine main harness.
  - 1.4 Proceed to the next step.
2. Connect labeled ignition coil harness connector to appropriate ignition coil. Route the ignition primary wire along top edge of assembly.
3. (Note: you may want a gasket/cushion for the valve cover to the CUTCovers) Place a small-block valve cover onto CUTCovers. Secure the valve cover to the CUTCovers using a ¼" x 20 bolt (CUTCovers depth of cover mounting hole is ½").
4. Carefully route the ignition coil secondary wires into slots. If you feel your ignition coil wires are not long enough, you can use a truck ignition coil wire set for the extra length needed.



## Accessories

1. Install oil fill plug (SM0010) onto the CUTCover. Tighten firmly.
2. Install the valve cover to the CUT cover using the supplied ¼" x 1" bolts.
3. Route 3/8" vent hose from throttle body to passenger-side vent hose adapter.
4. Route the 5/16" PCV vacuum supply hose to driver-side vent hose adapter. Cut the vacuum supply line at an inconspicuous location. Place included 5/16" PCV valve (white/natural portion of valve should be on the vacuum side of the hose) into cut area of the vacuum supply line.
5. Proceed to Finishing the Installation.

## Finishing Installation of the CUTCovers

1. As like all engine starting procedures, verify engine oil and coolant levels, accessory drive belts and hoses, and all support systems.
2. Before engine firing/re-firing verify all connections electrical and physical for proper fitting and torque. Make sure oil filler plug is tight and secure; PCV system is fully intact and connected. All electrical connectors are fully connected and terminated.
3. Make sure there is no pinched electrical wiring during the installation. Especially, the ignition coil primary harness inside the small-block valve cover.